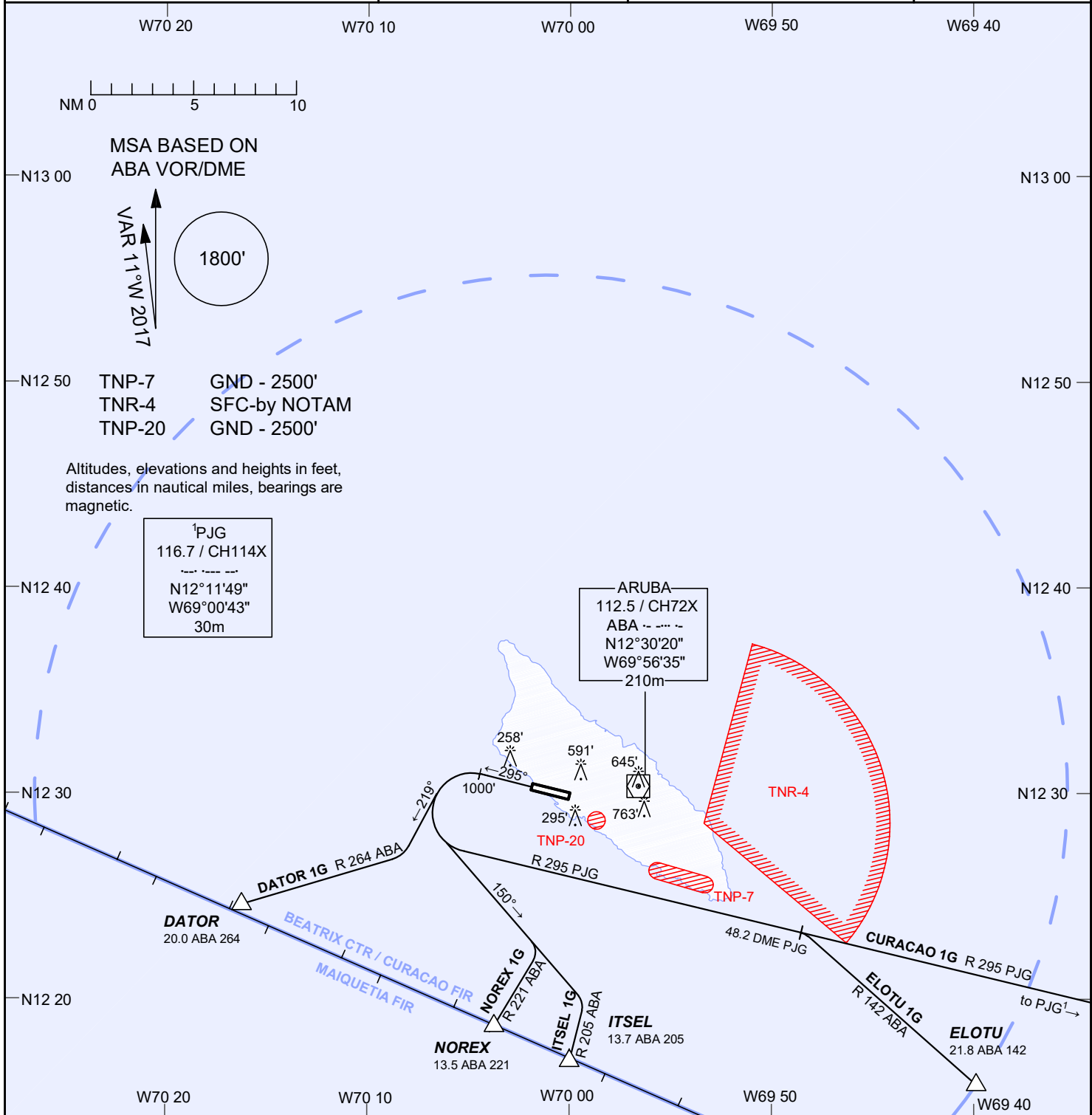


AIP DUTCH CARIBBEAN

VOR DEPARTURES RWY 29	AD ELEVATION: 62' TRANS LEVEL: FL 40 TRANS ALT: 2500' (2438')	BEATRIX: TWR 118.0 APP 120.9 APRON 121.6 ATIS 132.1	REINA BEATRIX INT'L (TNCA) ARUBA
-----------------------	---	---	--



CURACAO1G
Climb on runway magnetic track 295°, at or above 1000' turn left to intercept and follow R-295 PJG to PJG.

DATOR1G
Climb on runway magnetic track 295°, at or above 1000' turn left to magnetic track 219° to intercept and follow R-264 ABA to DATOR (20.0 DME ABA).

ELOTU1G
Climb on runway magnetic track 295°, at or above 1000' turn left to intercept and follow R-295 PJG up to 48.2 DME PJG. Turn right to intercept and follow R-142 ABA to ELOTU (21.8 DME ABA).

ITSEL1G
Climb on runway magnetic track 295°, at or above 1000' turn left to magnetic track 150° to intercept and follow R-205 ABA to ITSEL (13.7 DME ABA).

NOREX1G
Climb on runway magnetic track 295°, at or above 1000' turn left to magnetic track 150° to intercept and follow R-221 ABA to NOREX (13.5 DME ABA).